

## Product Introduction



# PM84

ELEVATE YOUR BUSINESS WITH A PRACTICAL  
YET HIGH-QUALITY MOBILE COMPUTER

# At-a-glance



2.0 GHz



Android  
13



5.45" HD+  
720 x 1440



Enterprise  
Hot-Swap



13 MP rear  
5 MP front



1D/2D



1.8 m (6 ft.)  
w/ Rugged boot



IP65 / IP67



# Specifications



## Dimension



# Specifications



## Processor

Octa-core 2.0 GHz  
4 GB RAM / 64 GB ROM



## Dimensions

78.0 x 164.8 x 17.5 mm  
(3.1 x 6.5 x 0.7 in.)



## Network

IEEE 802.11 a/b/g/n/ac/d/h/l/  
k/r/v, 1x1 MU-MIMO  
4G LTE (optional)  
BT Class 1 / Ver.5.1 /  
BLE support



## Sensors

Proximity sensor  
Light ambient sensor  
Accelerometer  
Gyro sensor  
Digital compass



## Android

Android 13 (upgradable to 15)  
GMS & AOSP  
FOTA (Firmware Over The Air)  
Android Enterprise Recommended



## Battery

Standard battery: 4,950 mAh  
Extended battery: 7,020 mAh



## Audio

Two built-in microphones  
Speaker on the front side  
(93 ± 3 dB)  
Receiver



## Ruggedness

IP65 / IP67  
1.8 m (6 ft.) with rugged boot and  
1.5 m (5 ft.) without,  
multiple drops to the granite,  
across the operating temp. range,  
MIL-STD-810H



## Display

5.45" IPS panel, HD+ (720 x 1440)  
Daylight readable (440 nits, typical)  
Multi-touch capacitive  
Corning Gorilla Glass



## Camera

13 MP rear, Auto Focus  
5 MP front



## Data Capture

Supporting 1D/2D barcode  
symbolologies



## User Environment

Operating temperature  
-20 °C to 60 °C (-4 °F to 140 °F)  
Storage temperature  
-25 °C to 70 °C (-13 °F to 158 °F)

## Practical with power

### Key Features, No Compromise

---

Meticulously designed, the PM84 stands out as a **practical** choice for businesses. The device remains cost-effective while maintaining key features that help businesses improve productivity.

The efficient and easy-to-use **Android 13**, a swift and accurate **scan engine** supporting widely-used **1D/2D symbologies**, a robust **7,020 mAh battery** for extended use, **Wi-Fi** connection, and optional **LTE**.

### Features Tailored for All Business Sizes

---

The PM84 offers **enterprise-grade features** suitable for both small and large businesses. Benefit from the **Enterprise Hot-Swap**, ensuring uninterrupted screen and Wi-Fi connectivity during battery changes. The multi-touch capacitive screen accommodates **glove, wet, and stylus input**—an essential feature for industrial settings.



# Android OS

## Android 13

---

Elevating efficiency beyond its predecessors, Android 13 is optimized for **better battery life, boosting the overall performance** of PM84.

Its enhanced **security management** simplifies security settings, ensuring safer operations.

## Android Enterprise Recommended

---

Android Enterprise Recommended, a **Google-led program**, guarantees **top-tier hardware quality for businesses**. This certification ensures regular and extended support for **security patches**, required by Google's strict standards.



# Durability

## Built for Durability and Longevity

Tailored to excel in rigorous business settings, the PM84 is fortified with a **1.5 m (5 ft.) drop** resilience onto granite and aligns with the **MIL-STD-810H** criteria. The **Rugged Boot** accessory further enhances its toughness, increasing the drop resistance to **1.8 m (6 ft.)**

The **500-cycle at 0.5 m (1.6 ft.) tumble** test is done to make sure PM84 is designed for the rough work environment.

Operating in a dramatic range of **temperatures from -20°C to 60°C (-4°F to 140°F)**, the PM84's robustness significantly outshines typical consumer smartphones.

Thanks to its **IP65 / IP67** rating for dust and water defense, complemented by **Corning Gorilla Glass**, the PM84 promises a prolonged lifespan marked by prominent durability.



# Accessories

PM84 offers a variety of accessories as options—making it available to many use cases

## Standard



AC/DC Power Adaptor



Country Plug



USB-C Cable



Battery

- Standard: 4,950 mAh
- Extended: 7,020 mAh



LCD Protection Film



Hand Strap

## Optional



Single Slot Cradle (opt. Ethernet)



4 Slot Battery Charger



UHF RFID Reader



Gun Handle



Rugged Boot

The images of the accessories are for illustrative purposes only and may differ from the actual products.



## Android solution



**EmKit™**  
Enterprise Mobility Kit

The **Enterprise Mobility Kit (EmKit™)** is Point Mobile's value-added service kit engineered for the pure benefit of system integrators. Experience software services as intelligent as the ruggedness of our industrial handhelds - fully compatible with all our Android GMS certified devices.

### <Main features>



#### Direct Clone

Solution for restoring the devices to the same settings with no internet connection. With Direct Clone, a Master PDA becomes a hotspot server and sends its backup file to nearby client devices to clone the settings.



#### Scan2Stage

PC tool for provisioning Point Mobile Android devices. With Scan2Stage, IT administrator can prepare the settings of the device and make QR code for Scan2Set.

# Android solution



## PULS

Patches, Updates & Lifetime Support

PULS is Point Mobile's lifetime solution, which extends the life cycle of Android-based Point Mobile enterprise devices up to seven years after a product launch.

Up to 5 years from the initial launch until the end of sales

Two additional years after the end of sales

Up to 7 years of updates & security patches



**Stay up-to-date** with the latest update for up to 7 years



**Security patches** are provided regularly



Conveniently update your devices in the field **by FOTA**

# PMDM Introduction



Make a Profile  
Easily as You want



Check Device Status  
At a Glance



Easy Deployment

**PMDM is a mobile device management solution  
for managing and monitoring your PM Android devices**

Centralized management of enterprise devices is vital for better productivity. You should provide a device configuration so that the workers can concentrate on their work with the device, and also decrease the device downtime by predicting when to replace the battery, etc.

**PMDM make the centralized management that IT administrators want real with various management feature**

# PMDM Features

## Device Management

Easy Grouping & Easy Deployment

Features	Standard (Free)	Enterprise (Paid)
Fast Enrollment & Easy Provisioning	✓	✓
Smart Group	✓	✓

## Asset Management

Check Device Status At a Glance

Device Status Visibility	✓	✓
Custom Notifications	✓	✓
OS Update	✓	✓
Device Info Synchronization	✓	✓
Remote Control		✓
App & File Store		✓

## Profile Management

Make a Profile Easily as You Want

Configure Profile with Ease	✓	✓
-----------------------------	---	---

### ✓ Increase productivity

Fast Enrollment and easy provisioning for all Point mobile devices.

### ✓ Minimize downtime

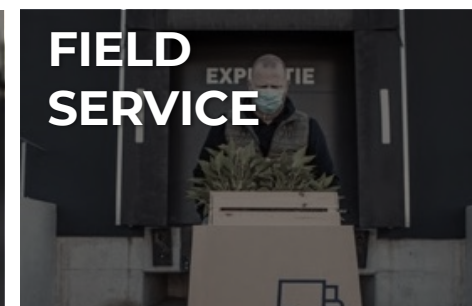
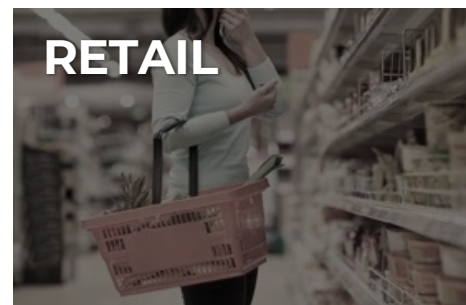
Monitoring device and battery health status to know replacement time in advance

### ✓ Remote control

PMDM will support Remote control in the new version.

# Applications

**Point Mobile is at the forefront of Digital Transformation**  
– where people and things are connected





## **Point Mobile Co., Ltd.**

<https://www.pointmobile.com/en/contactus>

Tel: +82-2-3397-7870~1

ARS: 1800-3010

Fax: +82-2-3397-7872

Address: 9F Gabeul Great Valley,  
32, Digital-ro 9-gil, Geumcheon-gu,  
Seoul, Korea 08512